



Webbs  
Helping people move since 1994

**Foxes Rake | Cannock | WS11 5UD**  
Offers In The Region Of £210,000



## Summary

**\*\* WELL PRESENTED SEMI DETACHED HOME \*\* TWO GENEROUS BEDROOMS \*\* REFITTED BATHROOM \*\* SOUGHT AFTER LOCATION \*\* LANDSCAPED REAR GARDEN \*\* IDEAL FIRST TIME BUYER HOME \*\* EARLY VIEWING ESSENTIAL \*\***

Webbs Estate Agents are delighted to offer for sale this beautifully presented and deceptively spacious home, ideally situated within easy reach of highly regarded schools, excellent transport links, and a range of local shops and amenities.

The accommodation briefly comprises an entrance hallway, a modern fitted kitchen, and a spacious lounge/diner with French doors opening onto the rear garden, creating an ideal space for both everyday living and entertaining.

To the first floor, the property boasts two generous double bedrooms and a stylish refitted family bathroom.

Externally, the current owners have thoughtfully landscaped the rear garden, providing an attractive outdoor space to relax and enjoy. Ample off-road parking is available via a driveway to the side of the property.

An internal inspection is highly recommended to fully appreciate the accommodation on offer.

## Key Features

- SOUGHT AFTER LOCATION
- REFITTED FAMILY BATHROOM
- EXCELLENT SCHOOLS AND TRANSPORT LINKS
- CLOSE TO LOCAL SHOPS AND AMENITIES
- EARLY VIEWING ADVISED
- TWO GENEROUS BEDROOMS
- LANDSCAPED REAR GARDEN
- SPACIOUS LOUNGE DINER
- EASY ACCESS TO CANNOCK CHASE

## Rooms and Dimensions

### ENTRANCE HALLWAY

### KITCHEN

10'0" x 6'0" (3.05m x 1.83m )

### SPACIOUS LOUNGE DINER

12'11" x 12'0" (3.96m x 3.66m )

### LANDING

### BEDROOM ONE

12'0" x 10'0" (3.66m x 3.05m )

### BEDROOM TWO

10'11" x 7'1" (3.35m x 2.18m )

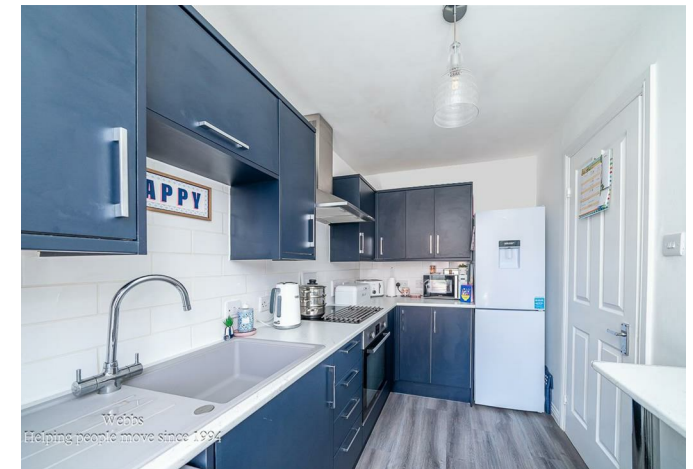
### REFITTED FAMILY BATHROOM

### LANDSCAPED REAR GARDEN

### FRONT GARDEN AND DRIVEWAY

### IDENTIFICATION CHECKS - C

### AWAITING VENDOR APPROVAL





GROUND FLOOR

1ST FLOOR



Whilst every attempt has been made to ensure the accuracy of the floorplan contained here, measurements of doors, windows, rooms and any other items are approximate and no responsibility is taken for any errors, omissions or mis-statement. This plan is for illustrative purposes only and should be used as such by any prospective purchaser. The services, systems and appliances shown have not been tested and no guarantee as to their operability or efficiency can be given.  
Made with Metropix. ©2026

Webbs Estate Agents - endeavour to maintain accurate depictions of properties in Virtual Tours, Floor Plans and descriptions, however, these are intended only as a guide and purchasers must satisfy themselves by personal inspection.

